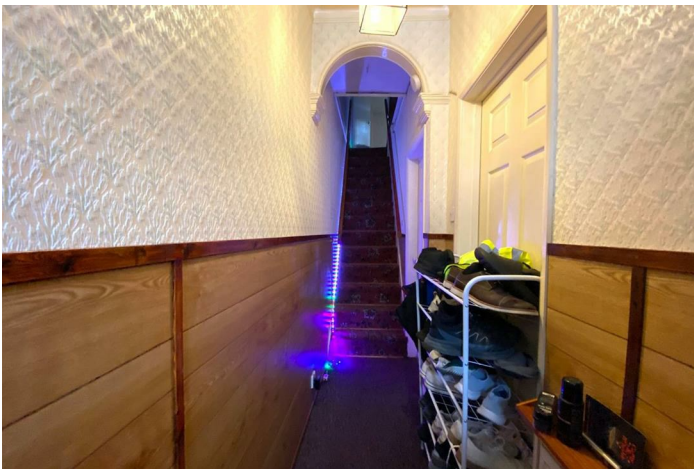


FREEHOLD



House - Terraced (EPC Rating: E)

**HAZEL STREET, BEDE ISLAND, LEICESTER, LE2
7JN**

£210,000

SETHS

3 1 2 E

3 Bedroom House - Terraced located in Leicester

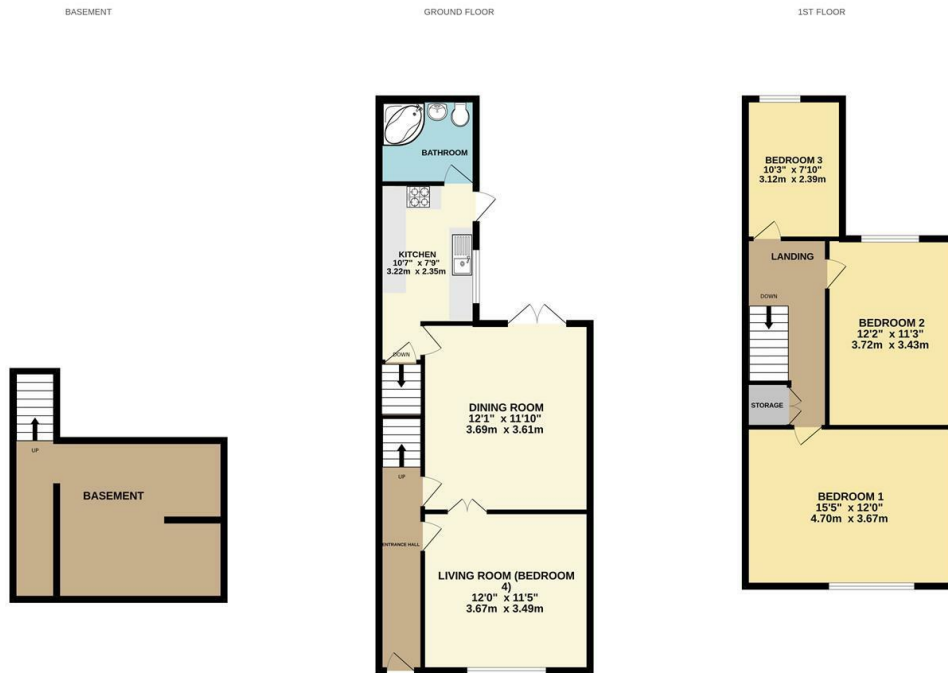
**** ATTENTION INVESTORS + CLOSE TO UNIVERSITIES & CITY CENTRE ****

Seths are delighted to bring to market this 3 Bedroom Mid Terraced Property located on Hazel Street, Bede Island just a short distance from both universities, local amenities, and Leicester City Centre making it perfect for first-time buyers or investors alike.

Downstairs comprises two generous reception rooms, a fitted kitchen, and a modern bathroom, with the added bonus of access to a basement, ideal for storage or potential conversion (STPP).

Upstairs, there are three well-sized bedrooms, all with ample storage space and fitted wardrobes.

Viewing by appt only.

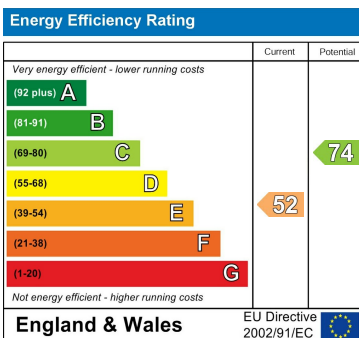


Whilst every attempt has been made to ensure the accuracy of the floorplan contained here, measurements of doors, windows, rooms and any other items are approximate and no responsibility is taken for any error, omission or mis-statement. This plan is for illustrative purposes only and should be used as such by any prospective purchaser. The services, systems and appliances shown have not been tested and no guarantee as to their operability or efficiency can be given.
 Made with Metropix ©2025

Council Tax Band

A

Energy Performance Graph



Call us on

0116 266 9977

sales@seths.co.uk

www.seths.co.uk

Agents Note: Whilst every care has been taken to prepare these particulars, they are for guidance purposes only. All measurements are approximate and are for general guidance purposes only and whilst every care has been taken to ensure their accuracy, they should not be relied upon and potential buyers are advised to recheck the measurements.

